

# Certificate of Analysis

**Sample ID:** 201001-001-002  
**Retention Sample ID:** 6,843  
**Client (Code) Name:** (CAN0079) Oil Science (Pty) Ltd.  
**Client Address:** Unit 104, Radar Dad, 17 Queens Park Ave  
**Batch:** CBD Pet Biscuits Rooibos & Chamomile  
**Date Receipt:** 2020/10/01 10:55:22  
**Date Report Released:** 2020/10/08 13:01:36  
**Sample Type:** Solid  
**Package Condition:** Intact  
**Received By:** AWRBKA  
**Sample Amount:** 200 gram  
**Tamper Proof:** Yes

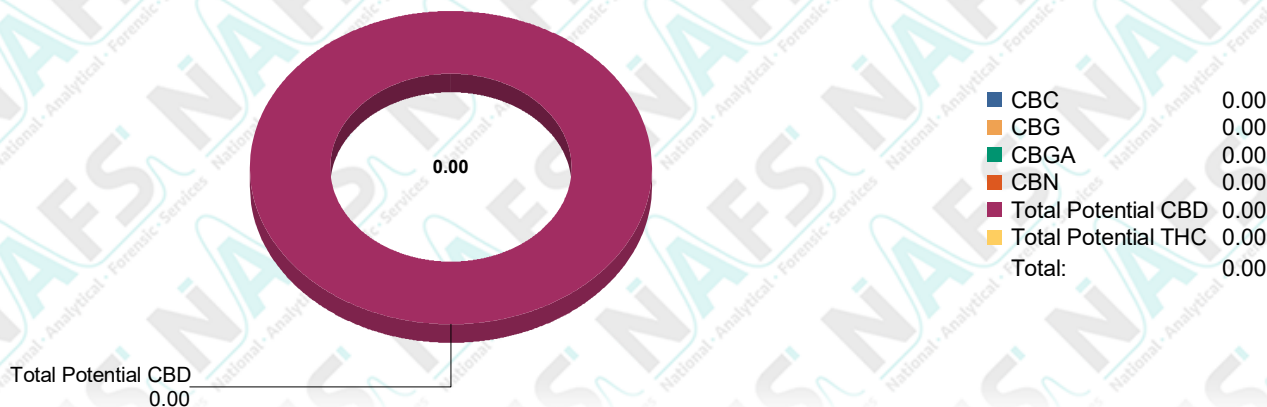


**Test Name:** Potency Cannabis(HPLC) (201001-001-002)

**Specification:** N/A  
**Test Method:** \*TM006.3  
**Sampling Method:** SH007

| Analyte             | Results        | *Std Dev. | *Safety Limits |
|---------------------|----------------|-----------|----------------|
| CBC                 | ND % Weight    | % Weight  | N/A            |
| CBD                 | 0.002 % Weight | % Weight  | N/A            |
| CBD-A               | ND % Weight    | % Weight  | N/A            |
| CBD-V               | ND % Weight    | % Weight  | N/A            |
| CBG                 | ND % Weight    | % Weight  | N/A            |
| CBG-A               | ND % Weight    | % Weight  | N/A            |
| CBN                 | ND % Weight    | % Weight  | N/A            |
| Delta-9-THC         | ND % Weight    | % Weight  | N/A            |
| THC-A               | ND % Weight    | % Weight  | N/A            |
| THC-V               | ND % Weight    | % Weight  | N/A            |
| Total Potential CBD | 0.002 % Weight | % Weight  | N/A            |
| Total Potential THC | ND % Weight    | % Weight  | N/A            |

**Analyst:** Alexander Wrbka 2020/10/06 09:37:40



\*ND (Not Detected)  
\*The current test method version is Validated  
\*Standard Deviation (Uncertainty of measurement of applicable duplicate sample)  
\*Safety Limits (Regulatory limits specified are according to the United States pharmacopeia where applicable)

**Test Name:** Residual Solvents Class 3 (USP467) (201001-001-002)

**Specification:** USP Specification (Oral)

**Test Method:** \*TM003.3

**Sampling Method:** SH007

| Analyte                | Results | *Std Dev. | *Safety Limits         |
|------------------------|---------|-----------|------------------------|
| 2-Butanol              | ND ppm  | ppm       | < 5000 ppm <b>PASS</b> |
| Acetone                | ND ppm  | ppm       | < 5000 ppm <b>PASS</b> |
| Methylethyl Ketone     | ND ppm  | ppm       | < 5000 ppm <b>PASS</b> |
| Ethanol                | ND ppm  | ppm       | < 5000 ppm <b>PASS</b> |
| Ethyl Acetate          | ND ppm  | ppm       | < 5000 ppm <b>PASS</b> |
| Heptane                | ND ppm  | ppm       | < 5000 ppm <b>PASS</b> |
| Isopropanol            | ND ppm  | ppm       | < 5000 ppm <b>PASS</b> |
| Pentane                | ND ppm  | ppm       | < 5000 ppm <b>PASS</b> |
| tert-Butylmethyl Ether | ND ppm  | ppm       | < 5000 ppm <b>PASS</b> |

**Analyst:** Paul Myburgh 2020/10/07 08:53:40

0.00

|                        |      |
|------------------------|------|
| 2-Butanol              | 0.00 |
| Acetone                | 0.00 |
| Butanone               | 0.00 |
| Ethanol                | 0.00 |
| Ethyl Acetate          | 0.00 |
| Isopropanol            | 0.00 |
| tert-Butylmethyl Ether | 0.00 |
| Heptane                | 0.00 |
| Total:                 | 0.00 |

\*ND (Not Detected)  
\*The current test method version is Validated  
\*Standard Deviation (Uncertainty of measurement of applicable duplicate sample)  
\*Safety Limits (Regulatory limits specified are according to the United States pharmacopeia where applicable)

\*OR (Outside Range) For quantitative analysis, calibration range is the concentration within which the analysis method is accurate. For limit tests the a single point calibration is employed with a range of +-15% across the specification limit. An OR analyte flag signifies that only semi-quantitative data has been reported.

**Test Name:** Terpenes (201001-001-002)

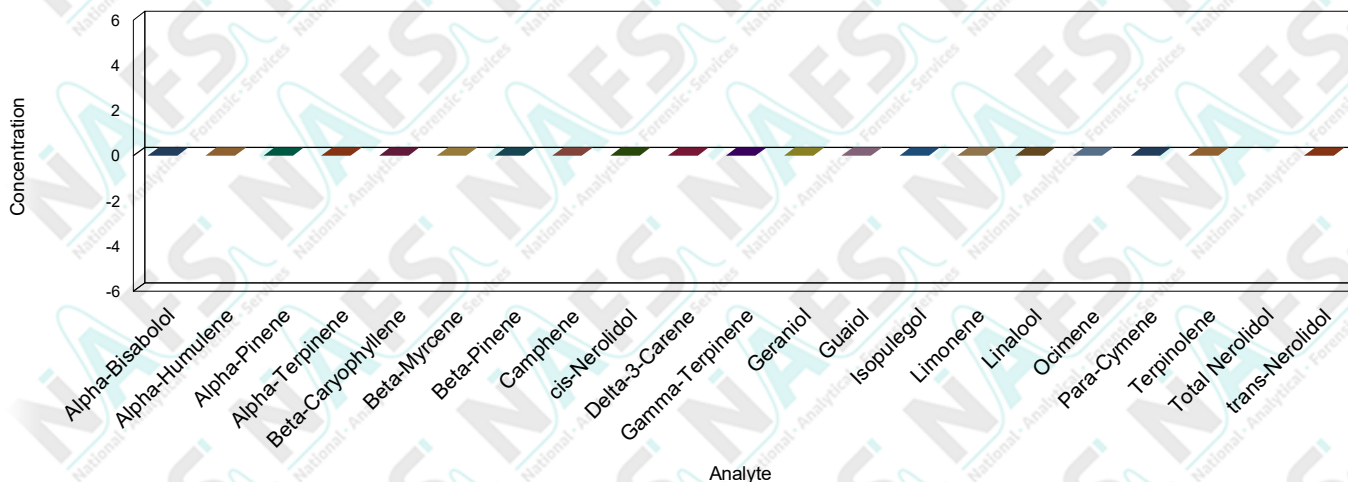
**Specification:** N/A

**Test Method:** \*TM003.5

**Sampling Method:** SH007

| Analyte            | Results | *Std Dev. | *Safety Limits |
|--------------------|---------|-----------|----------------|
| Alpha-Bisabolol    | ND mg/g | mg/g      | N/A            |
| Alpha-Humulene     | ND mg/g | mg/g      | N/A            |
| Alpha-Pinene       | ND mg/g | mg/g      | N/A            |
| Alpha-Terpinene    | ND mg/g | mg/g      | N/A            |
| Beta-Caryophyllene | ND mg/g | mg/g      | N/A            |
| Beta-Myrcene       | ND mg/g | mg/g      | N/A            |
| Beta-Pinene        | ND mg/g | mg/g      | N/A            |
| Camphene           | ND mg/g | mg/g      | N/A            |
| cis-Nerolidol      | ND mg/g | mg/g      | N/A            |
| Delta-3-Carene     | ND mg/g | mg/g      | N/A            |
| Gamma-Terpinene    | ND mg/g | mg/g      | N/A            |
| Geraniol           | ND mg/g | mg/g      | N/A            |
| Guaiol             | ND mg/g | mg/g      | N/A            |
| Isopulegol         | ND mg/g | mg/g      | N/A            |
| Limonene           | ND mg/g | mg/g      | N/A            |
| Linalool           | ND mg/g | mg/g      | N/A            |
| Ocimene            | ND mg/g | mg/g      | N/A            |
| Para-Cymene        | ND mg/g | mg/g      | N/A            |
| Terpinolene        | ND mg/g | mg/g      | N/A            |
| Total Nerolidol    | ND mg/g | mg/g      | N/A            |
| trans-Nerolidol    | ND mg/g | mg/g      | N/A            |

**Analyst:** Thembani Twala      2020/10/02 11:47:59



\*ND (Not Detected)

\*The current test method version is Un-Validated

\*Standard Deviation (Uncertainty of measurement of applicable duplicate sample)

\*Safety Limits (Regulatory limits specified are according to the United States pharmacopeia where applicable)

## Interpretations and Opinions:

---

DEVI-LOG-20-006

## Additions, Deviations & Exclusions:

---

One biscuit weighs approximately 8553 mg

*It should be noted that NAFS will only analyze the sample/s received. This sample cannot be regarded as representative of entire batch or crop. It is the responsibility of the client to ensure a representative sample is taken in an appropriate tamper proof sample container. NAFS cannot be held liable for negligent handling, storage and transport of client samples, prior to receipt. Any complaints may be directed toward NAFS using info@nafs.co.za (QA005)*

## Quality Assurance Manager

**Released By:** Jeanette Leygonie

**Released On:** 2020/10/08 13:01:36

*This certificate of analysis shall not be reproduced except in full, without written approval of NAFS. The information contained in this communication from the sender is confidential. It is intended solely for use by the recipient and others authorized to receive it. If you are not the recipient, you are hereby notified that any disclosure, copying, distribution or taking action in relation of the contents of this information is strictly prohibited and may be unlawful. The results obtained may be used for anonymous statistical research purposes. NAFS cannot be held liable for any loss or damage arising from, directly or indirectly related to, sample test results.*