

Certificate of Analysis

Sample ID: 191206-002-005
Retention Sample ID: 4,182
Client ID: Oil Science
Client Address: Unit 104, Radar Dad, 17 Queens Park Ave
Batch: FL004210(Pet CBD 250 mg)
Date Receipt: 2019/12/06 10:57:01
Date Report Released: 2019/12/11 14:42:45
Sample Type: Liquid
Package Condition: Intact
Received By: JLEYGONIE
Sample Amount: 50 gram
Tamper Proof: Yes



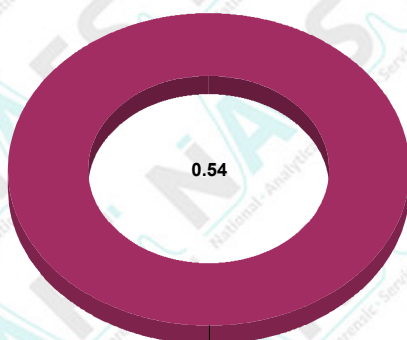
Test Name: Potency Cannabis(HPLC) (191206-002-005)

Test Method: *TM006.3

Specification: USP Specification (Oral)

Analyte	Results	*Std Dev.	*Safety Limits
CBC	ND % Weight	% Weight	N/A
CBD	0.485 % Weight	+/- 0.035 % Weight	N/A
CBD-A	0.059 % Weight	+/- 0.008 % Weight	N/A
CBG	ND % Weight	% Weight	N/A
CBGA	ND % Weight	% Weight	N/A
CBN	ND % Weight	% Weight	N/A
Delta-9-THC	ND % Weight	% Weight	N/A
THC-A	ND % Weight	% Weight	N/A
Total Potential CBD	0.537 % Weight	+/- 0.028 % Weight	N/A
Total Potential THC	ND % Weight	% Weight	N/A

Analyst: Alexander Wrbka 2019/12/11 11:09:55



Total Potential CBD
0.54

CBC	0.00
CBG	0.00
CBGA	0.00
CBN	0.00
Total Potential CBD	0.54
Total Potential THC	0.00
Total:	0.54

*ND (Not Detected)

*The current test method version is Validated

*Standard Deviation (Uncertainty of measurement of applicable duplicate sample)

*Safety Limits (Regulatory limits specified are according to the United States pharmacopeia where applicable)

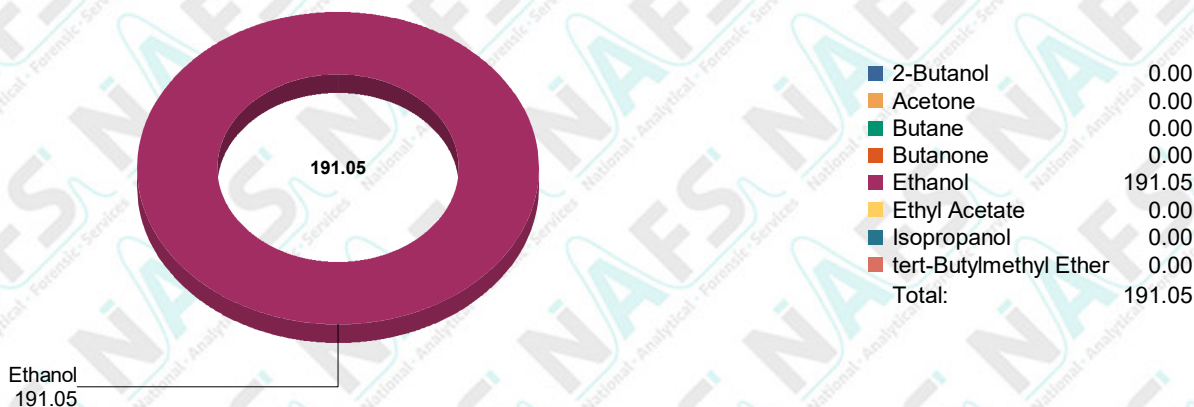
Test Name: Residual Solvents Class 3 (USP467) (191206-002-005)

Test Method: *TM003.3

Specification: USP Specification (Oral)

Analyte	Results	*Std Dev.	*Safety Limits
2-Butanol	ND ppm	ppm	< 5000 ppm PASS
Acetone	ND ppm	ppm	< 5000 ppm PASS
Butane	ND ppm	ppm	< 5000 ppm PASS
Methylethyl Ketone	ND ppm	ppm	< 5000 ppm PASS
Ethanol	191.050 ppm OR	+/- 23.957 ppm	< 5000 ppm PASS
Ethyl Acetate	ND ppm	ppm	< 5000 ppm PASS
Isopropanol	ND ppm	ppm	< 5000 ppm PASS
tert-Butylmethyl Ether	ND ppm	ppm	< 5000 ppm PASS

Analyst: Alexander Wrbka 2019/12/11 10:41:10



*ND (Not Detected)

*The current test method version is Un-Validated

*Standard Deviation (Uncertainty of measurement of applicable duplicate sample)

*Safety Limits (Regulatory limits specified are according to the United States pharmacopeia where applicable)

*OR (Outside Range) For quantitative analysis, calibration range is the concentration within which the analysis method is accurate. For limit tests the single point calibration is employed with a range of +/-15% across the specification limit.

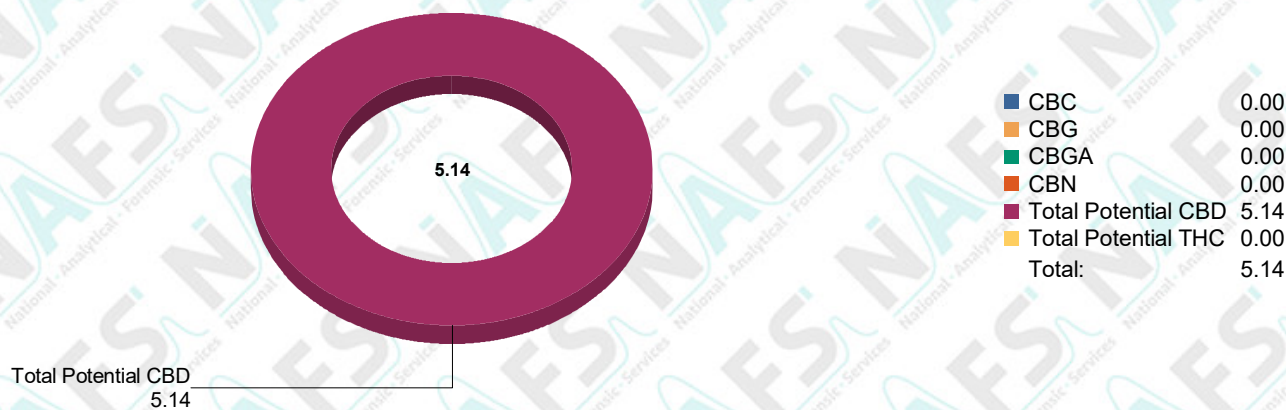
Test Name: Potency Cannabis Milligram Content (HPLC) (191206-002-005)

Test Method: *TM006.3

Specification: USP Specification (Oral)

Analyte	Results	*Std Dev.	*Safety Limits
CBC	ND mg/mL	mg/mL	N/A
CBD	4.644 mg/mL	+ - 0.339 mg/mL	N/A
CBDA	0.566 mg/mL	+ - 0.083 mg/mL	N/A
CBG	ND mg/mL	mg/mL	N/A
CBGA	ND mg/mL	mg/mL	N/A
CBN	ND mg/mL	mg/mL	N/A
THC	ND mg/mL	mg/mL	N/A
THCA	ND mg/mL	mg/mL	N/A
Total Potential CBD	5.140 mg/mL	+ - 0.266 mg/mL	N/A
Total Potential THC	ND mg/mL	mg/mL	N/A

Analyst: Alexander Wrbka 2019/12/11 13:47:10



*ND (Not Detected)

*The current test method version is Validated

*Standard Deviation (Uncertainty of measurement of applicable duplicate sample)

*Safety Limits (Regulatory limits specified are according to the United States pharmacopeia where applicable)

Test Name: Density (191206-002-005)

Test Method: *TM007

Specification: USP Specification (Oral)

Analyte	Results	*Std Dev.	*Safety Limits
Density	958.000 mg/mL	+ - 8.485 mg/mL	N/A
Sample Weight	47.900 mg	+ - 0.424 mg	N/A

Analyst: Alexander Wrbka 2019/12/10 15:03:25

*ND (Not Detected)

*The current test method version is Un-Validated

*Standard Deviation (Uncertainty of measurement of applicable duplicate sample)

*Safety Limits (Regulatory limits specified are according to the United States pharmacopeia where applicable)

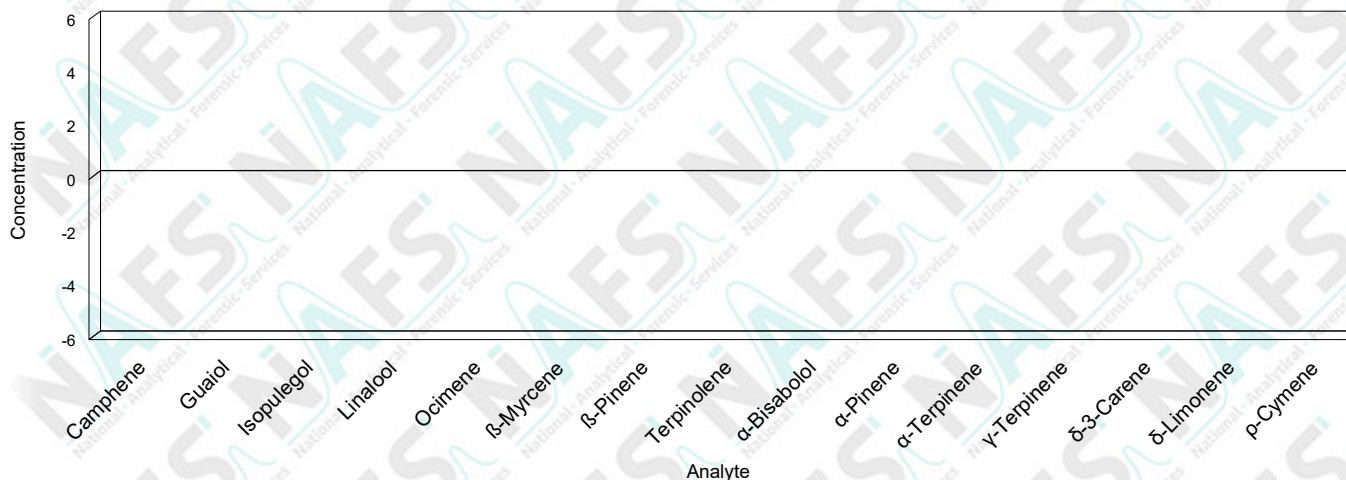
Test Name: Terpenes (191206-002-005)

Test Method: *TM003.5

Specification: USP Specification (Oral)

Analyte	Results	*Std Dev.	*Safety Limits
Camphene	ND mg/g	mg/g	N/A
Guaiol	ND mg/g	mg/g	N/A
Isopulegol	ND mg/g	mg/g	N/A
Linalool	ND mg/g	mg/g	N/A
Ocimene	ND mg/g	mg/g	N/A
β-Myrcene	ND mg/g	mg/g	N/A
β-Pinene	ND mg/g	mg/g	N/A
Terpinolene	ND mg/g	mg/g	N/A
α-Bisabolol	ND mg/g	mg/g	N/A
α-Pinene	ND mg/g	mg/g	N/A
α-Terpinene	ND mg/g	mg/g	N/A
γ-Terpinene	ND mg/g	mg/g	N/A
δ-3-Carene	ND mg/g	mg/g	N/A
δ-Limonene	ND mg/g	mg/g	N/A
p-Cymene	ND mg/g	mg/g	N/A

Analyst: Alexander Wrbka 2019/12/11 11:59:31



*ND (Not Detected)

*The current test method version is Un-Validated

*Standard Deviation (Uncertainty of measurement of applicable duplicate sample)

*Safety Limits (Regulatory limits specified are according to the United States pharmacopeia where applicable)

Interpretations and Opinions:

None

It should be noted that NAFS will only analyze the sample/s received. This sample cannot be regarded as representative of entire batch or crop. It is the responsibility of the client to ensure a representative sample is taken in an appropriate tamper proof sample container. NAFS cannot be held liable for negligent handling, storage and transport of client samples, prior to receipt. Any complaints may be directed toward NAFS using info@nafs.co.za (QA005)

Technical Signatory

Released By: Jeanette Leygonie

Released On: 2019/12/11 14:42:45

This certificate of analysis shall not be reproduced except in full, without written approval of NAFS. The information contained in this communication from the sender is confidential. It is intended solely for use by the recipient and others authorized to receive it. If you are not the recipient, you are hereby notified that any disclosure, copying, distribution or taking action in relation of the contents of this information is strictly prohibited and may be unlawful. The results obtained may be used for anonymous statistical research purposes. NAFS cannot be held liable for any loss or damage arising from, directly or indirectly related to, sample test results.